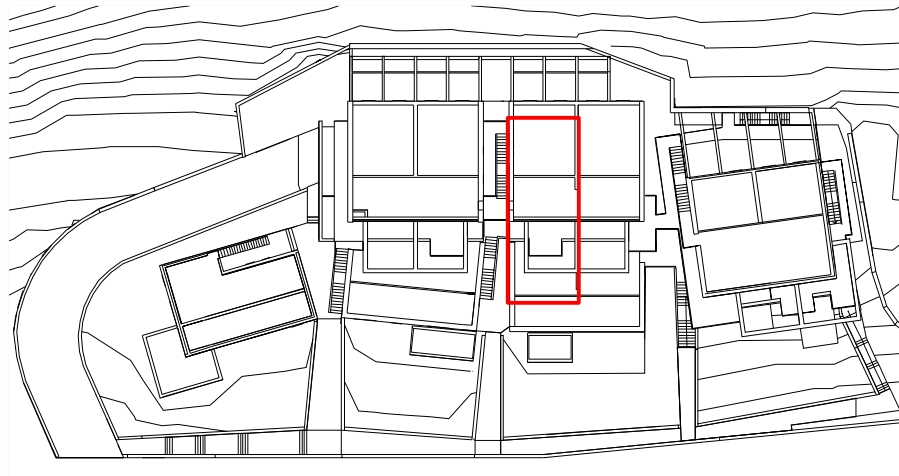


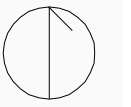
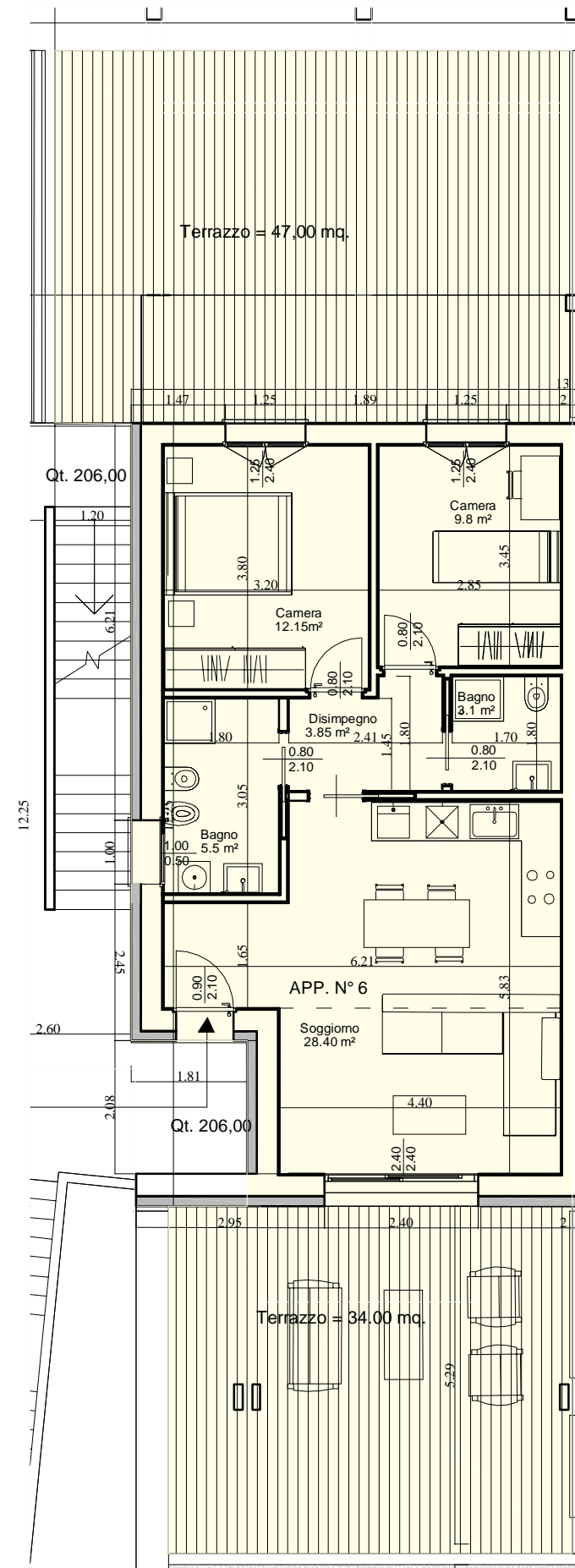
LOTTO N°1\_APPARTAMENTO N°6\_piano primo  
Qt. 206,00



**SUPERFICIE LORDA** = mq. 80,00 +  
**TERRAZZO FRONTE LAGO** = mq. 34,00 +  
**TERRAZZO LATO NORD** = mq. 47,00

2 BOX

Terrazzi fronte lago e Solarium - ai fini commerciali calcolati a 1/2  
 Terrazzi lato nord - ai fini commerciali calcolati a 1/3  
 Giardino - ai fini commerciali calcolati a 1/10



Pianta  
scala 1:100